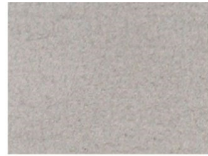


Colour Hardener

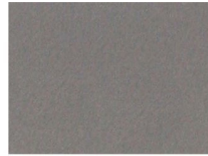
Permacolour Colour Hardener is hand broadcast over freshly poured concrete and worked into the surface using a bullfloat for the first application and trowel after the second coat is applied. When properly applied and troweled into the surface it forms a coloured concrete surface that is resistant to weathering, wear and normal abrasion.



BLUE GUM



MISTY GREY



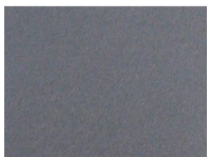
GRANITE GREY



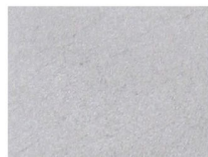
CHARCOAL



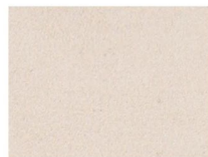
BLACK



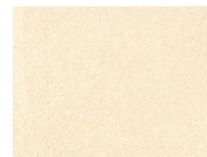
SLATE BLUE



SMOKEY BLUE



BONE



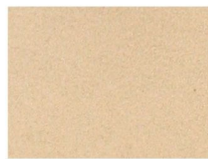
CREAM



PUMICE



BEIGE



BUCKWHEAT



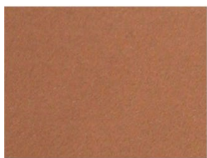
VINTAGE BUFF



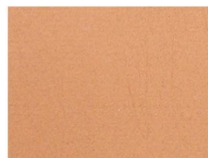
FAWN



SANDSTONE



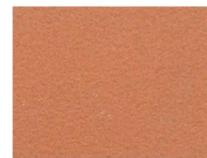
DESERT TAN



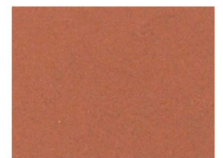
MANGO



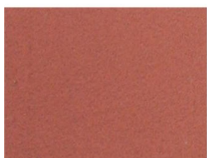
PAPAYA



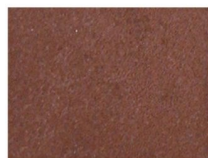
PEACH



TERRACOTTA



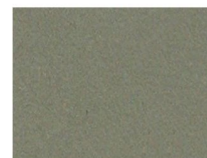
CORAL



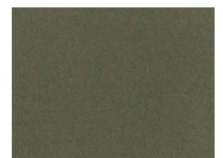
BRICK RED



MINT GREEN



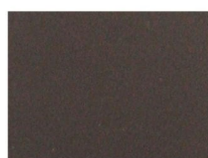
AUTUM GREEN



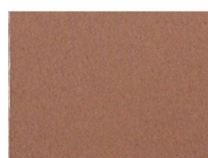
BOTTLE GREEN



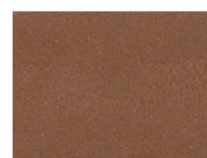
PAVLOVA



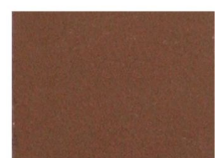
VOODOO



NUTMEG



COFFEE



TAN

Due to the batching process, colours may vary from actual colour